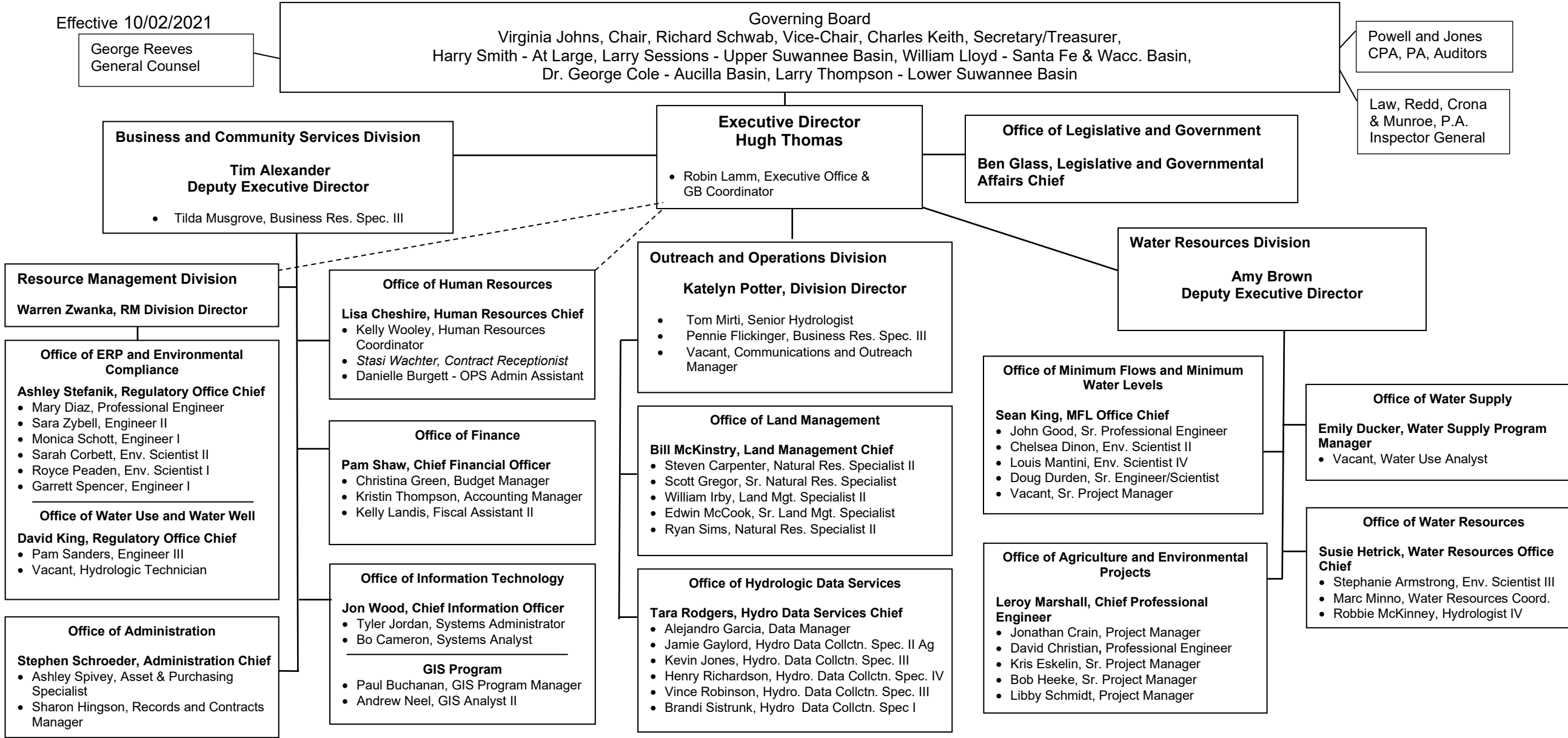


Suwannee River Water Management Organizational Chart

Effective 10/02/2021



Governing Board
Virginia Johns, Chair, Richard Schwab, Vice-Chair, Charles Keith, Secretary/Treasurer,
Harry Smith - At Large, Larry Sessions - Upper Suwannee Basin, William Lloyd - Santa Fe & Wacc. Basin,
Dr. George Cole - Aucilla Basin, Larry Thompson - Lower Suwannee Basin

George Reeves
General Counsel

Powell and Jones
CPA, PA, Auditors

Law, Redd, Crona
& Munroe, P.A.
Inspector General

Business and Community Services Division
Tim Alexander
Deputy Executive Director
• Tilda Musgrove, Business Res. Spec. III

Executive Director
Hugh Thomas
• Robin Lamm, Executive Office &
GB Coordinator

**Office of Legislative and Government
Affairs**
**Ben Glass, Legislative and Governmental
Affairs Chief**

Water Resources Division
Amy Brown
Deputy Executive Director

Resource Management Division
Warren Zwanka, RM Division Director

**Office of ERP and Environmental
Compliance**
Ashley Stefanik, Regulatory Office Chief
• Mary Diaz, Professional Engineer
• Sara Zybell, Engineer II
• Monica Schott, Engineer I
• Sarah Corbett, Env. Scientist II
• Royce Peaden, Env. Scientist I
• Garrett Spencer, Engineer I
Office of Water Use and Water Well
David King, Regulatory Office Chief
• Pam Sanders, Engineer III
• Vacant, Hydrologic Technician

Office of Administration
Stephen Schroeder, Administration Chief
• Ashley Spivey, Asset & Purchasing
Specialist
• Sharon Hingson, Records and Contracts
Manager

Office of Human Resources
Lisa Cheshire, Human Resources Chief
• Kelly Wooley, Human Resources
Coordinator
• Stasi Wachter, Contract Receptionist
• Danielle Burgett - OPS Admin Assistant

Office of Finance
Pam Shaw, Chief Financial Officer
• Christina Green, Budget Manager
• Kristin Thompson, Accounting Manager
• Kelly Landis, Fiscal Assistant II

Office of Information Technology
Jon Wood, Chief Information Officer
• Tyler Jordan, Systems Administrator
• Bo Cameron, Systems Analyst
GIS Program
• Paul Buchanan, GIS Program Manager
• Andrew Neel, GIS Analyst II

Outreach and Operations Division
Katelyn Potter, Division Director
• Tom Mirti, Senior Hydrologist
• Pennie Flickinger, Business Res. Spec. III
• Vacant, Communications and Outreach
Manager

Office of Land Management
Bill McKinstry, Land Management Chief
• Steven Carpenter, Natural Res. Specialist II
• Scott Gregor, Sr. Natural Res. Specialist
• William Irby, Land Mgt. Specialist II
• Edwin McCook, Sr. Land Mgt. Specialist
• Ryan Sims, Natural Res. Specialist II

Office of Hydrologic Data Services
Tara Rodgers, Hydro Data Services Chief
• Alejandro Garcia, Data Manager
• Jamie Gaylord, Hydro Data Collctn. Spec. II Ag
• Kevin Jones, Hydro. Data Collctn. Spec. III
• Henry Richardson, Hydro. Data Collctn. Spec. IV
• Vince Robinson, Hydro. Data Collctn. Spec. III
• Brandi Sistrunk, Hydro Data Collctn. Spec I

**Office of Minimum Flows and Minimum
Water Levels**
Sean King, MFL Office Chief
• John Good, Sr. Professional Engineer
• Chelsea Dinon, Env. Scientist II
• Louis Mantini, Env. Scientist IV
• Doug Durden, Sr. Engineer/Scientist
• Vacant, Sr. Project Manager

**Office of Agriculture and Environmental
Projects**
**Leroy Marshall, Chief Professional
Engineer**
• Jonathan Crain, Project Manager
• David Christian, Professional Engineer
• Kris Eskelin, Sr. Project Manager
• Bob Heeke, Sr. Project Manager
• Libby Schmidt, Project Manager

Office of Water Supply
**Emily Ducker, Water Supply Program
Manager**
• Vacant, Water Use Analyst

Office of Water Resources
**Susie Hetrick, Water Resources Office
Chief**
• Stephanie Armstrong, Env. Scientist III
• Marc Minno, Water Resources Coord.
• Robbie McKinney, Hydrologist IV